



LEICESTER MIDDLE SCHOOL

Finegold Alexander Architects

03/21/2019

School Building Committee



LEICESTER MIDDLE SCHOOL

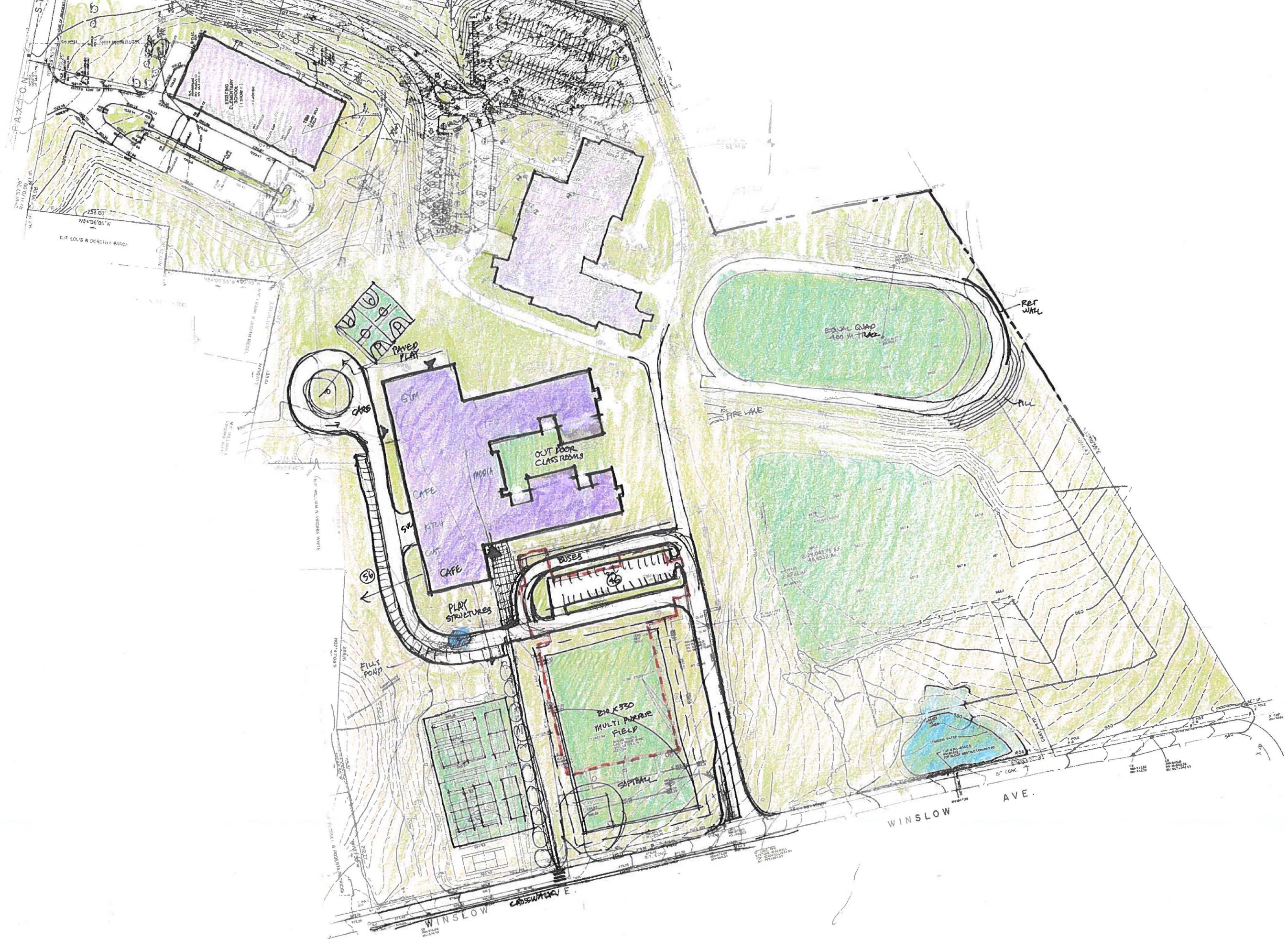
Finegold Alexander Architects

03/21/2019

School Building Committee



LEICESTER MIDDLE SCHOOL

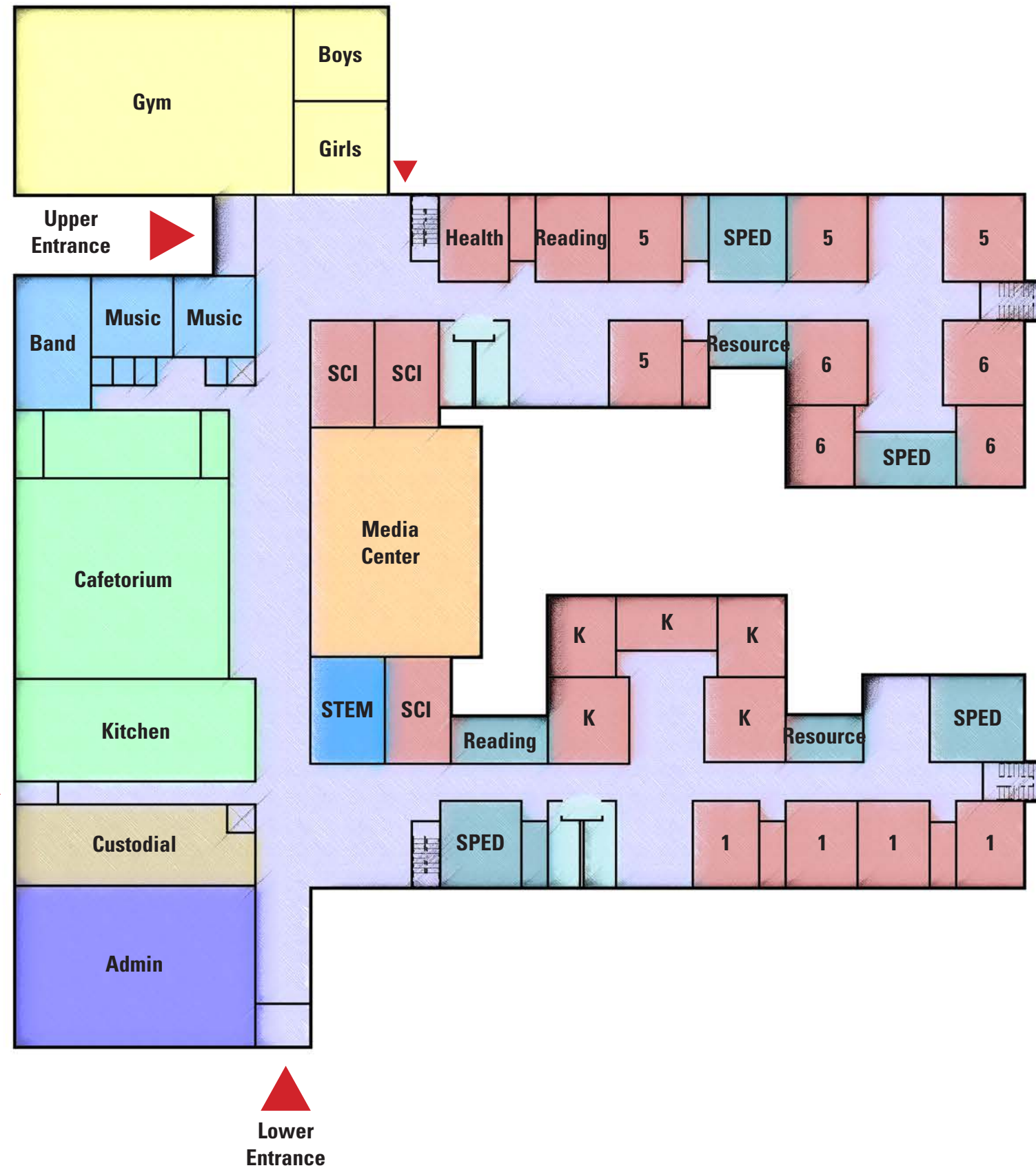


Opportunities:

- Central community spaces
- Clear circulation along a "street"
- Outdoor courtyard
- Distinct classroom wings
- Neighborhood clusters
- Building orientation
- Efficient layout

Challenges:

- Retention pond filled
- Softball field location
- Gymnasium location



KEY:

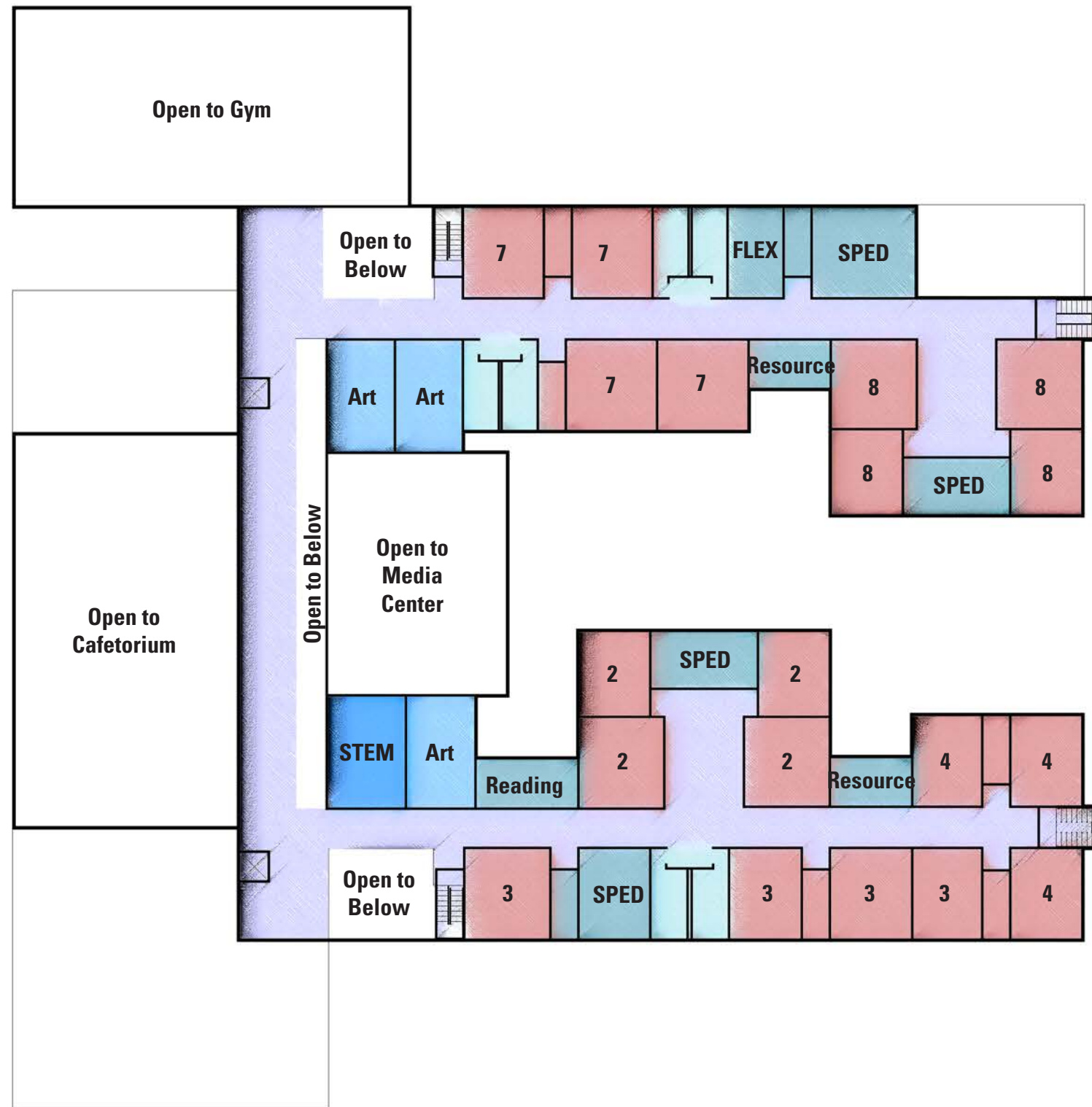
- Core Academic Spaces
- Media Center
- Custodial & Maintenance
- Health & Physical Education
- Dining & Food Service
- Restroom
- Special Education
- Vocations & Technology
- Non-Programmed Spaces
- Administration & Guidance

Opportunities:

- Central community spaces
- Clear circulation along a "street"
- Outdoor courtyard
- Distinct classroom wings
- Neighborhood clusters
- Building orientation
- Efficient layout

Challenges:

- Retention pond filled
- Softball field location
- Gymnasium location



KEY:

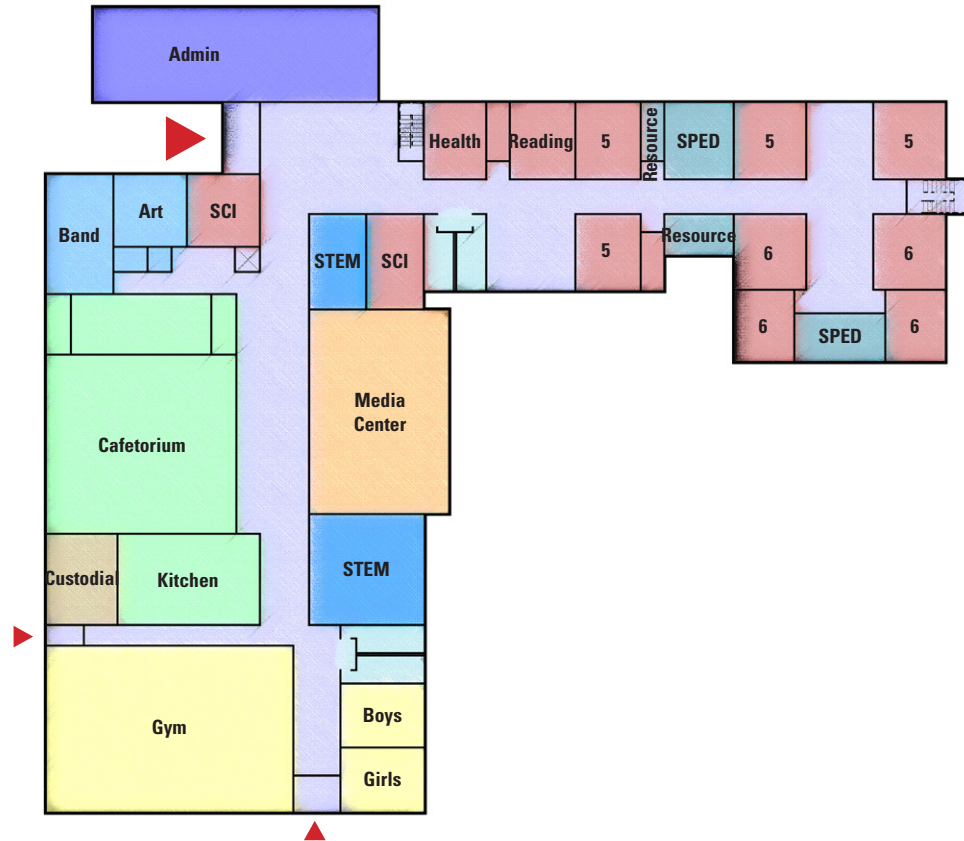
- Core Academic Spaces
- Media Center
- Custodial & Maintenance
- Health & Physical Education
- Dining & Food Service
- Restroom
- Special Education
- Vocations & Technology
- Non-Programed Spaces
- Administration & Guidance



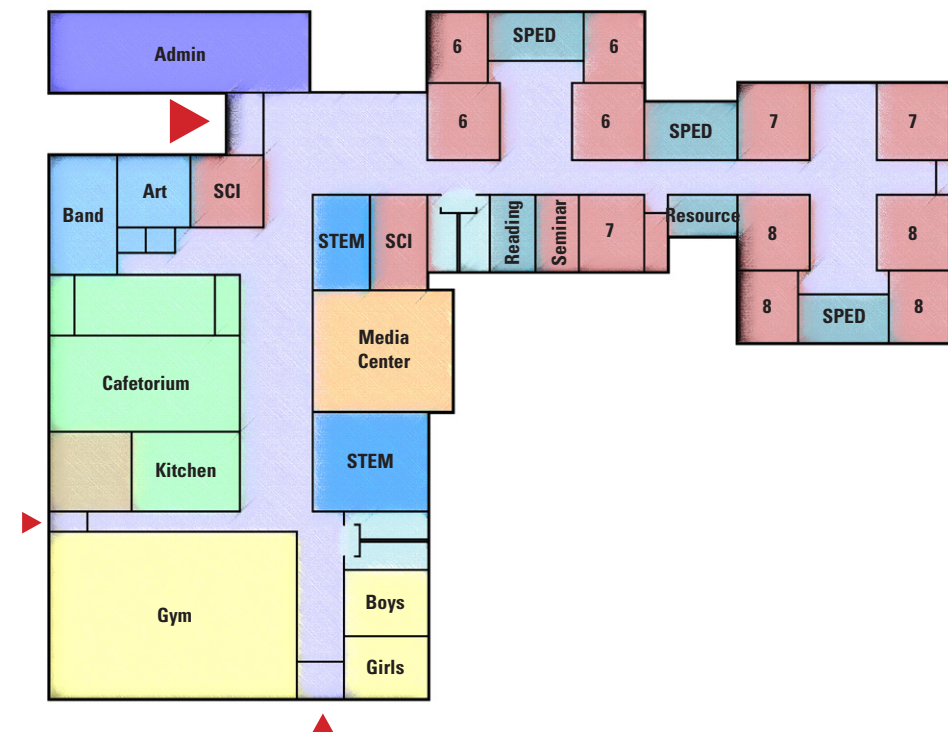
KEY:

- Core Academic Spaces
- Media Center
- Custodial & Maintenance
- Health & Physical Education
- Dining & Food Service
- Restroom
- Special Education
- Vocations & Technology
- Non-Programed Spaces
- Administration & Guidance

Original Scheme (5-8) - 2nd Floor



Original Scheme (5-8) - 1st Floor



Original Scheme (6-8) - 1st Floor



- Opportunities:**
- Central community spaces
 - Creates a "Heart"
 - Outdoor courtyard
 - Distinct classroom wings
 - Neighborhood clusters
 - Building orientation
 - Maximizes of multi-purpose field

- Challenges:**
- Second entry on upper level
 - Proximity to softball field



- KEY:**
- Core Academic Spaces
 - Media Center
 - Custodial & Maintenance
 - Health & Physical Education
 - Dining & Food Service
 - Restroom
 - Special Education
 - Vocations & Technology
 - Non-Programed Spaces
 - Admininstration & Guidance

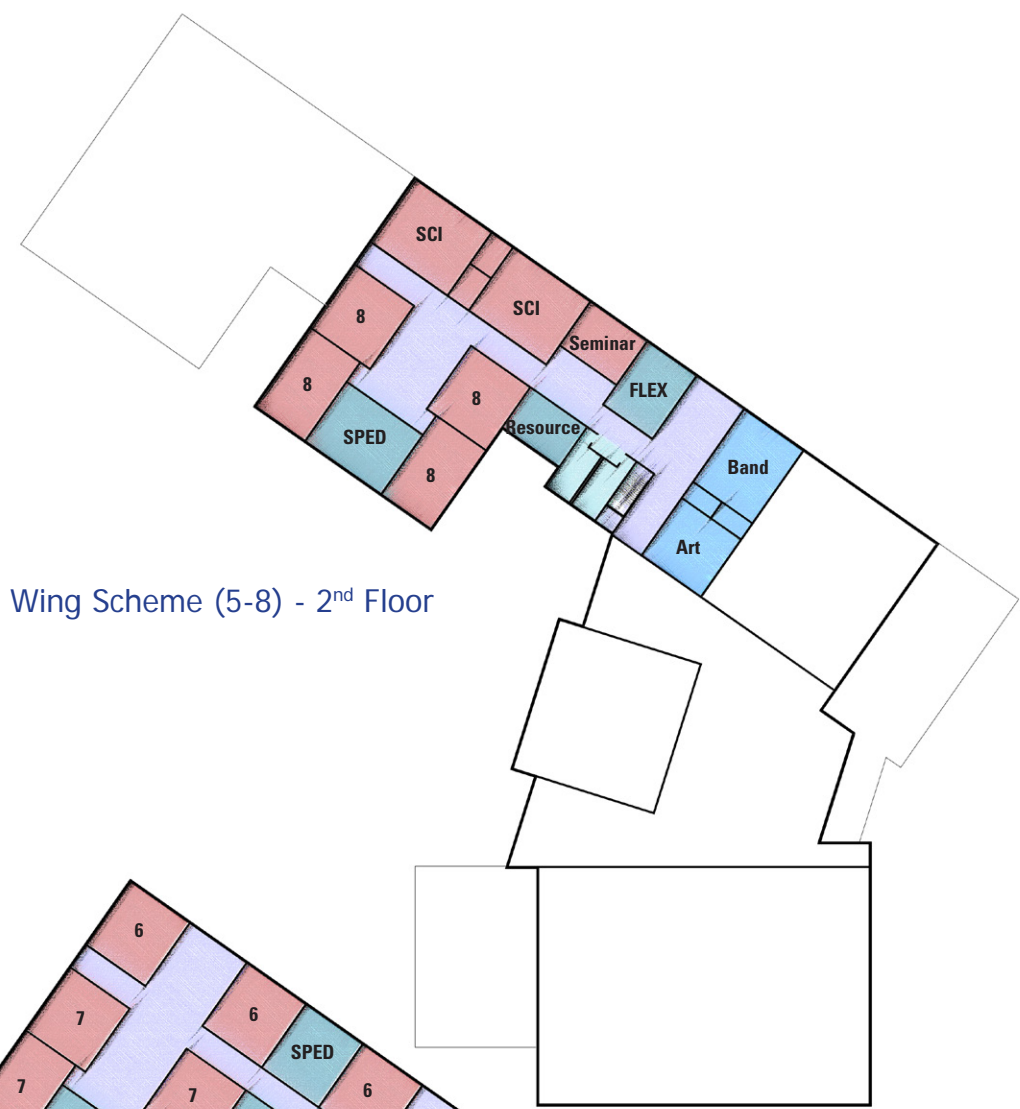


- Opportunities:**
- Central community spaces
 - Creates a "Heart"
 - Outdoor courtyard
 - Distinct classroom wings
 - Neighborhood clusters
 - Building orientation
 - Maximizes of multi-purpose field

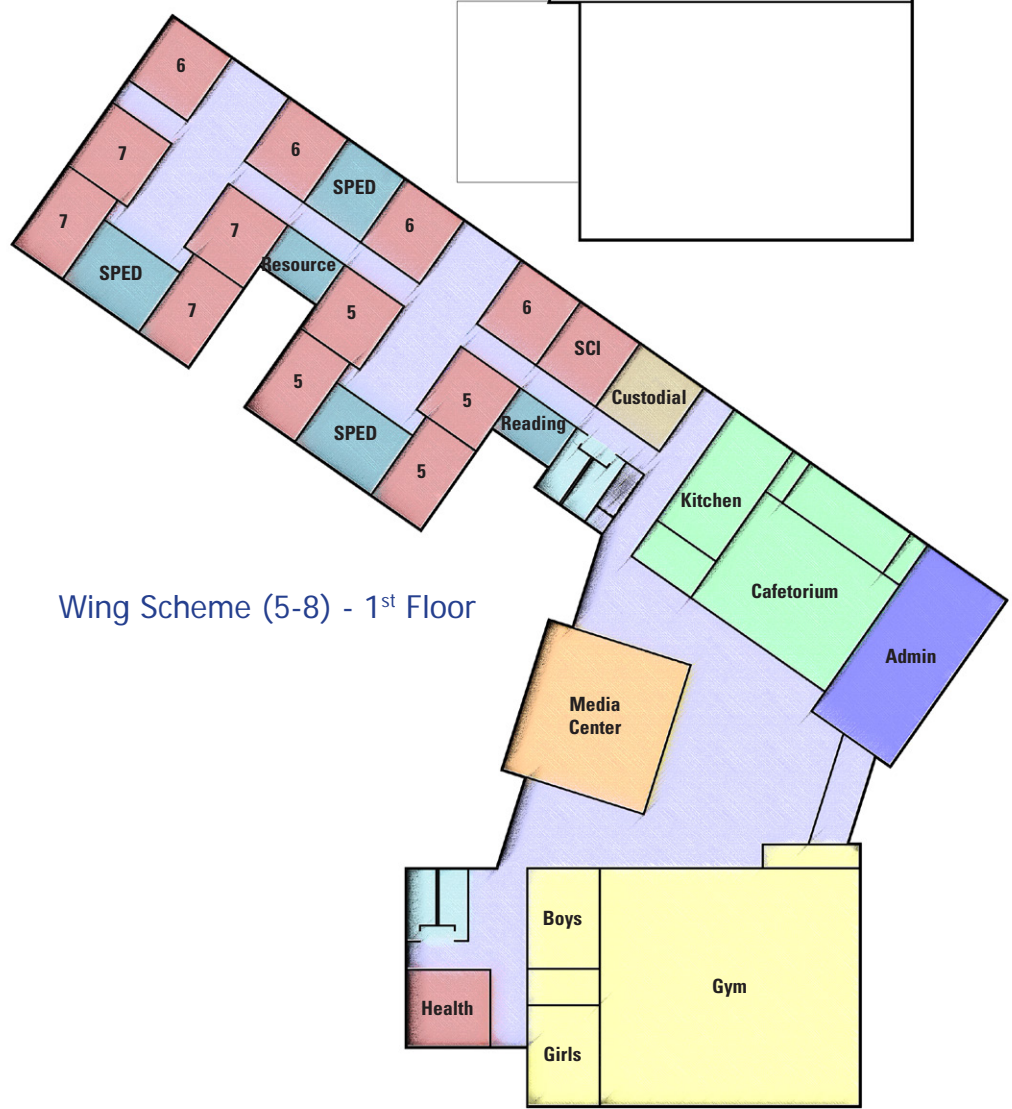
- Challenges:**
- Second entry on upper level
 - Proximity to softball field



- KEY:**
- Core Academic Spaces
 - Media Center
 - Custodial & Maintenance
 - Health & Physical Education
 - Dining & Food Service
 - Restroom
 - Special Education
 - Vocations & Technology
 - Non-Programed Spaces
 - Administration & Guidance



Wing Scheme (5-8) - 2nd Floor



Wing Scheme (5-8) - 1st Floor



Wing Scheme (6-8) - 1st Floor

- KEY:**
- Core Academic Spaces
 - Media Center
 - Custodial & Maintenance
 - Health & Physical Education
 - Dining & Food Service
 - Restroom
 - Special Education
 - Vocations & Technology
 - Non-Programmed Spaces
 - Administration & Guidance



LEICESTER MIDDLE SCHOOL

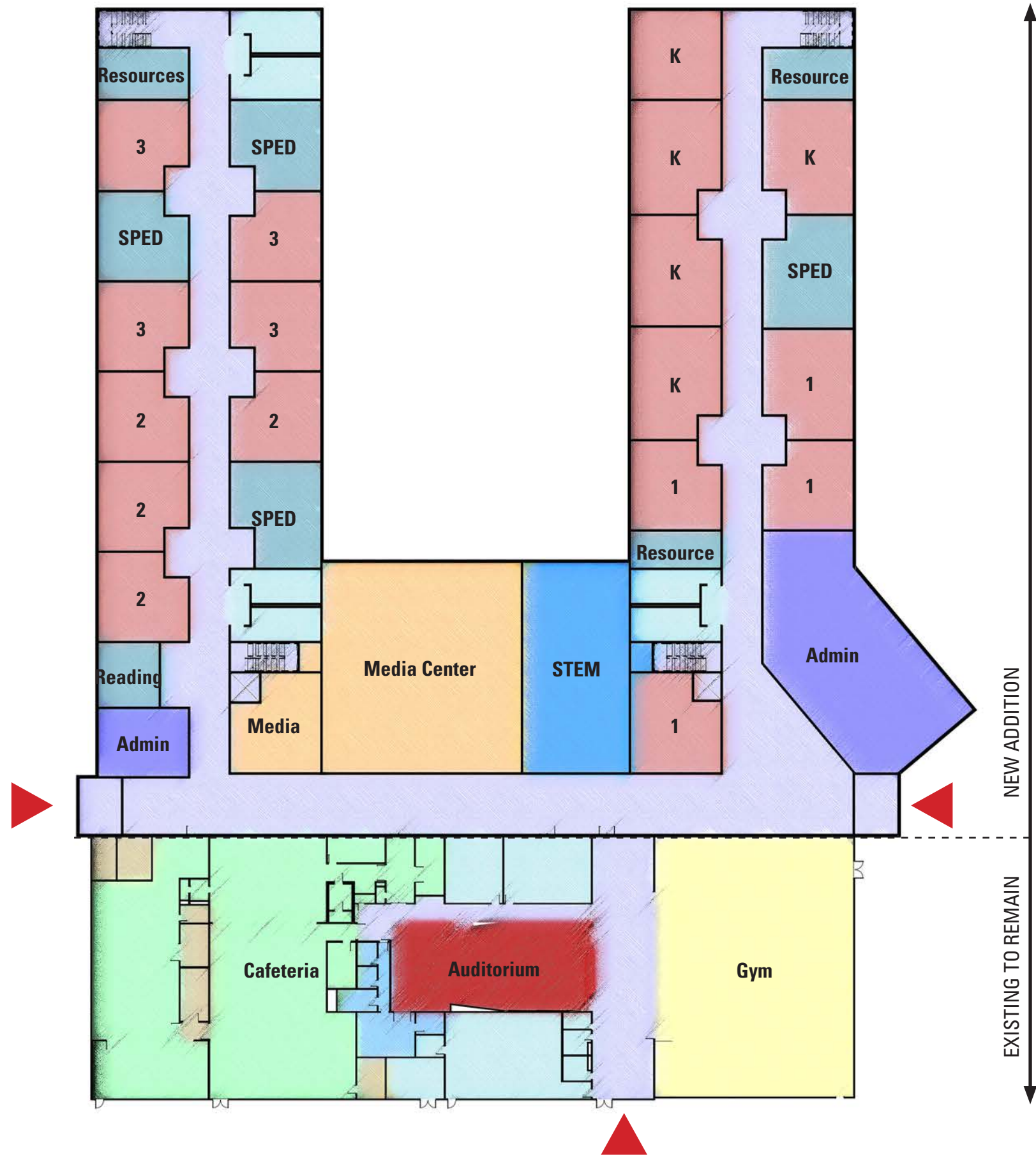


Opportunities:

- Large gymnasium
- Auditorium
- Simple massing

Challenges:

- Reduced field area
- Prominence of main entrance
- Extensive renovation required
- Building orientation



KEY:

- Core Academic Spaces
- Media Center
- Custodial & Maintenance
- Health & Physical Education
- Dining & Food Service
- Restroom
- Special Education
- Vocations & Technology
- Non-Programed Spaces
- Administration & Guidance

Opportunities:

- Large gymnasium
- Auditorium
- Simple massing

Challenges:

- Reduced field area
- Prominence of main entrance
- Extensive renovation required
- Building orientation

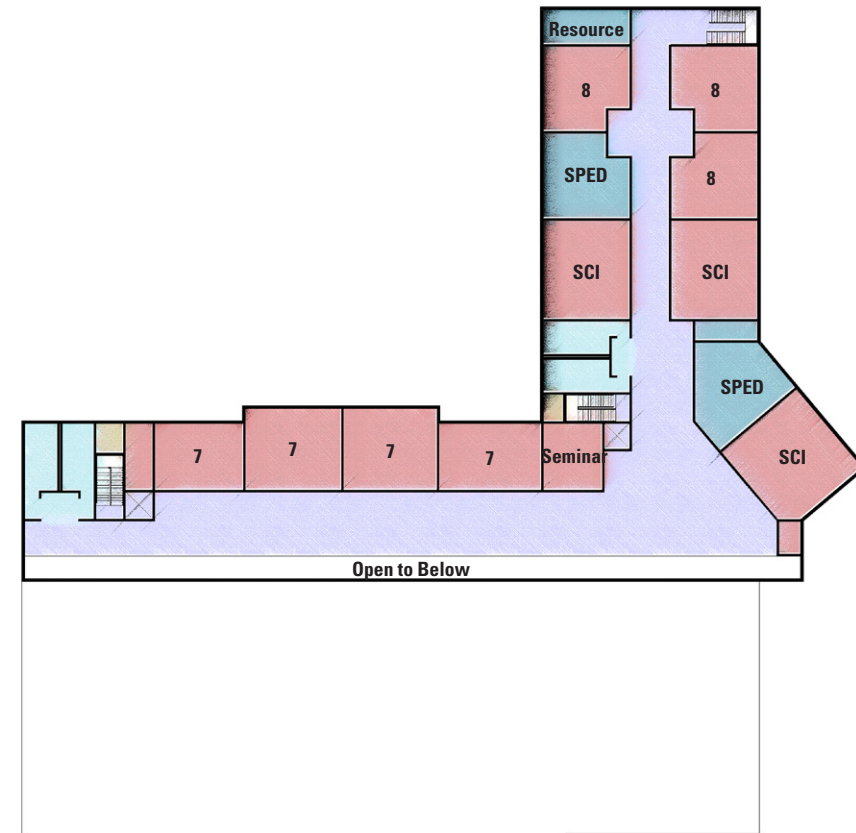


KEY:

- Core Academic Spaces
- Media Center
- Custodial & Maintenance
- Health & Physical Education
- Dining & Food Service
- Restroom
- Special Education
- Vocations & Technology
- Non-Programed Spaces
- Administration & Guidance



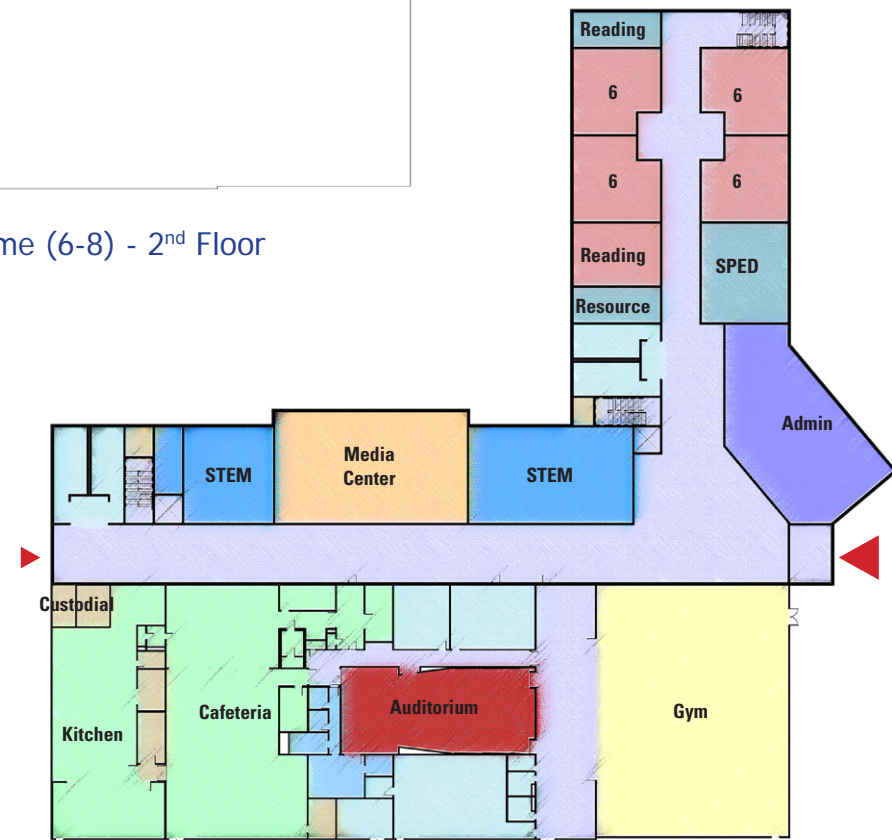
Add/Reno Scheme (5-8) - 2nd Floor



Add/Reno Scheme (6-8) - 2nd Floor



Add/Reno Scheme (5-8) - 1st Floor

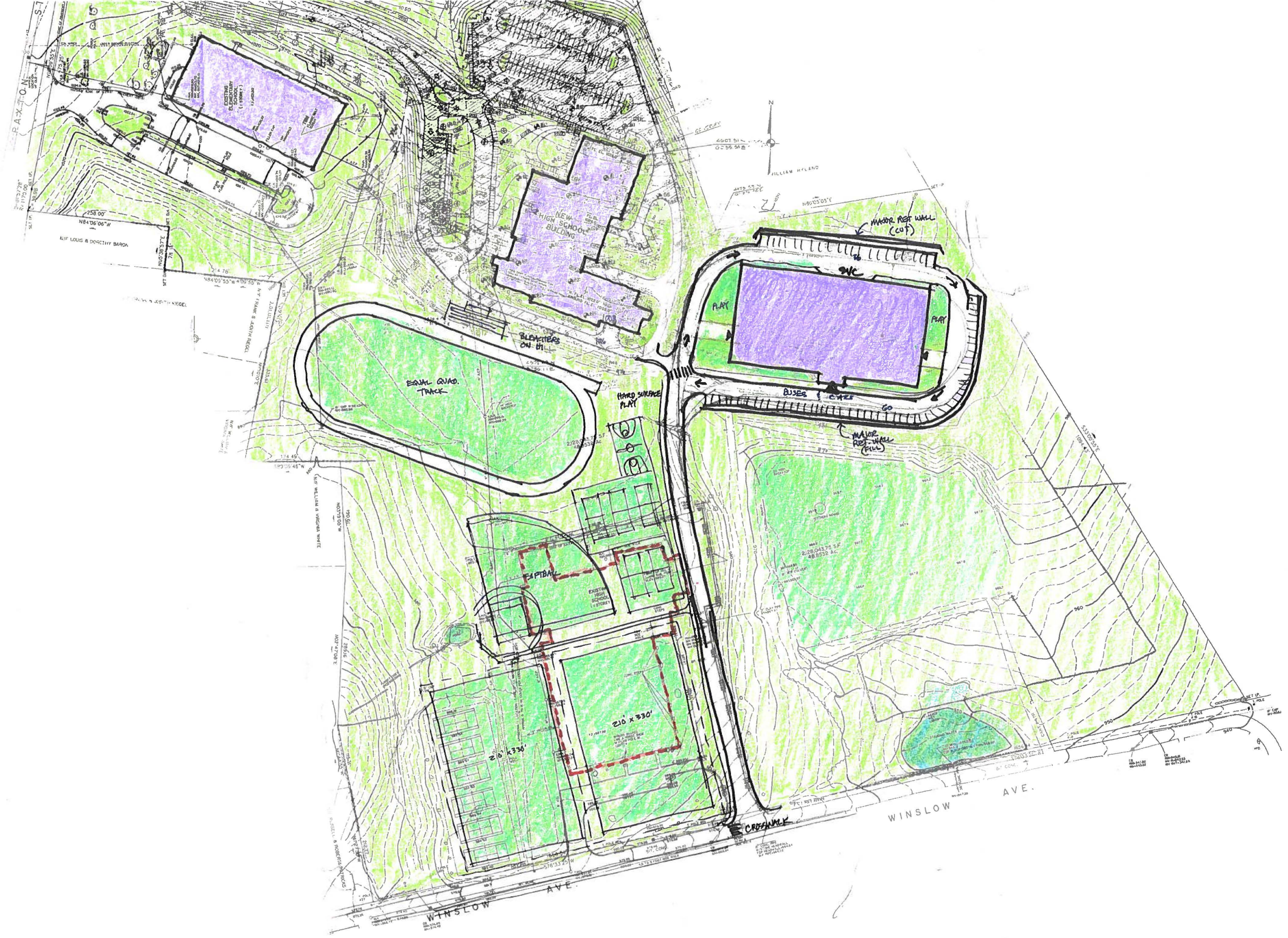


Add/Reno Scheme (6-8) - 1st Floor

KEY:

- Core Academic Spaces
- Media Center
- Custodial & Maintenance
- Health & Physical Education
- Dining & Food Service
- Restroom
- Special Education
- Vocations & Technology
- Non-Programed Spaces
- Administration & Guidance





Opportunities:

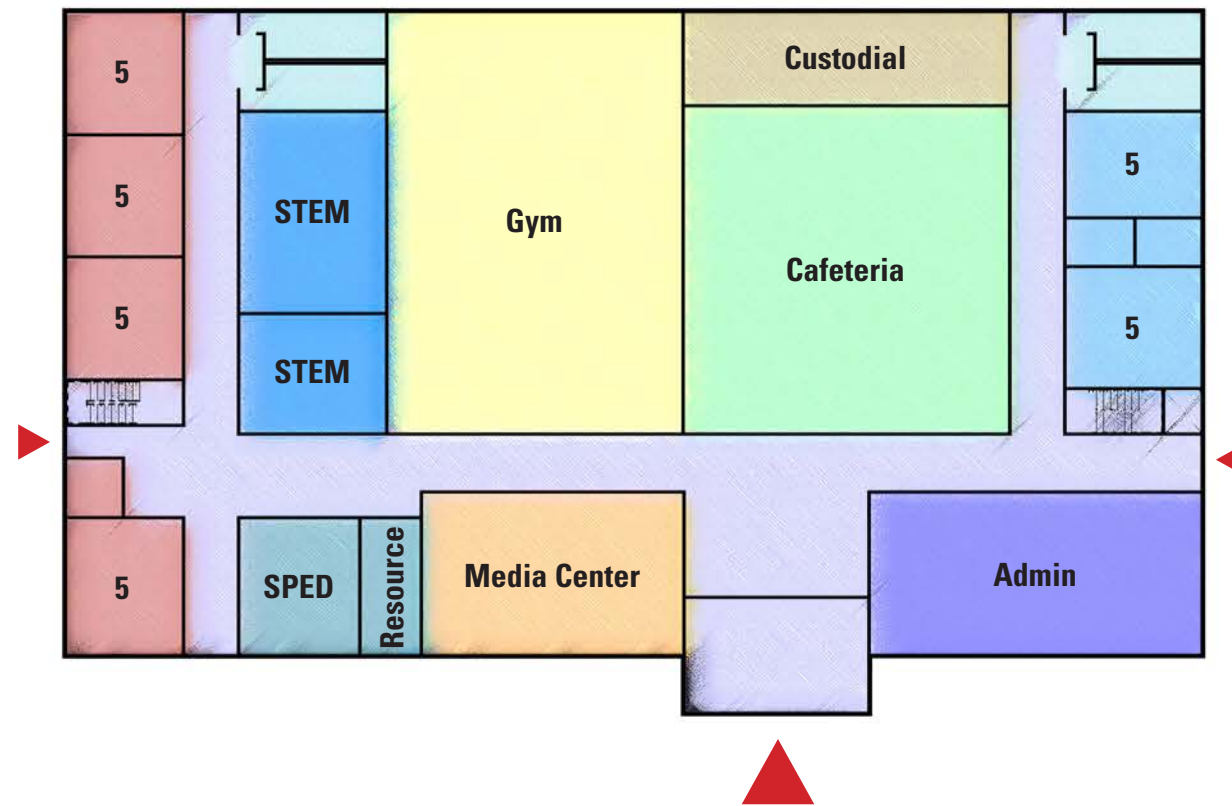
- Explores alternative site
- Efficient plan
- Consolidates playing fields
- Aligns new school with two existing buildings

Challenges:

- Very small site
- Inflexible plan
- Extensive retaining walls required
- Undersized play area and parking
- Distance to playing fields
- Cannot accommodate K-8 program

KEY:

- Core Academic Spaces
- Media Center
- Custodial & Maintenance
- Health & Physical Education
- Dining & Food Service
- Restroom
- Special Education
- Vocations & Technology
- Non-Programed Spaces
- Administration & Guidance



Opportunities:

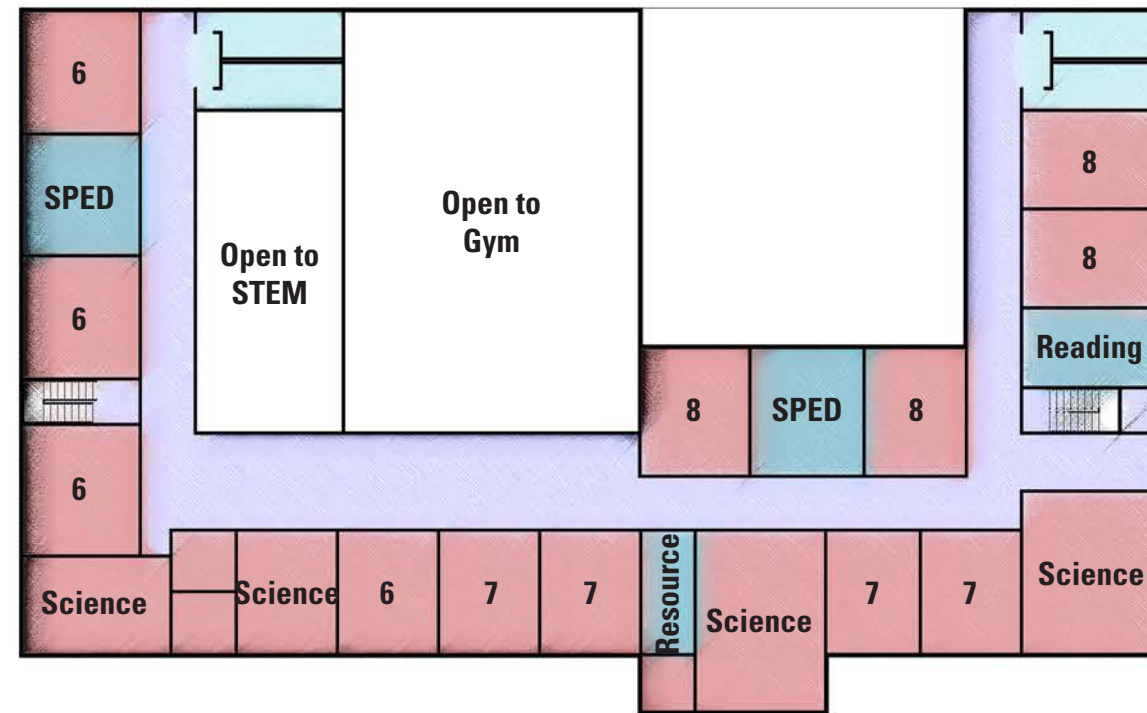
- Explores alternative site
- Efficient plan
- Consolidates playing fields
- Aligns new school with two existing buildings

Challenges:

- Very small site
- Inflexible plan
- Extensive retaining walls required
- Undersized play area and parking
- Distance to playing fields
- Cannot accommodate K-8 program

KEY:

- Core Academic Spaces
- Media Center
- Custodial & Maintenance
- Health & Physical Education
- Dining & Food Service
- Restroom
- Special Education
- Vocations & Technology
- Non-Programed Spaces
- Administration & Guidance





LEICESTER MIDDLE SCHOOL

Finegold Alexander Architects

03/21/2019

School Building Committee